

Delivering the Power of  
**POSSIBILITIES**



Residential Full Line Catalog





## WE'RE LOOKING FORWARD

At Nichiha, we think the future is bright.

Nichiha sets the standard for great looks and high performance. That's why Nichiha is dedicated to helping you build the perfect home, clad in our fiber cement solutions. We combine the aesthetic of wood with the uncompromising durability of fiber cement, giving you the look you want in considerably less time and for a fraction of the cost. Our expansive collection of textures, colors and finishes lift buildings of all kinds to new and unexpected places.

Once you've used a Nichiha product, you'll see the difference — and want to use it again and again.



6 | SAVANNAH SMOOTH, NICHIBOARD™

10 | SIERRA PREMIUM™ SHAKE

12 | NICHISHAKE™, STAGGERED, STRAIGHT

14 | NICHIPANEL™

16 | NICHITRIM™, NICHISOFFIT™

18 | MODERN PRODUCTS







## DURABILITY FOR THE FUTURE

Where strength, selection and sustainability meet.

Nichiha sets the standard for great looks and high performance. Thanks to our state-of-the-art technology, Nichiha products give you the wood look you want with the durability our standards demand. Whether you need full-scale boards or individual shakes, our fiber cement products all perform to the same high level. Plus, we offer a wide variety of formats, textures and colors to ensure that you achieve the exact aesthetic you're envisioning.



RESISTANT TO:  
 ROTTING | WARPING | PESTS | DELAMINATION

## Naturally above and beyond

Nichiha fiber cement products are about more than looking good — we want to make sure that our processes help our planet and our customer. For starters, we're proud that fiber cement panels are classified as green products. Comprised primarily of fly ash, our products divert waste from landfills and put it to practical use.

We also have a long history of conserving resources and employing manufacturing best practices. 90% of all materials used in our manufacturing process are sourced within 200 miles of our facility. We also strive to conserve water and reduce waste, with 95% of the water used in making our products recaptured, processed and used again, while 100% of our pre-cured fiber cement scrap is reused. When you use Nichiha fiber cement cladding, you know that you're using a product that stands with your aesthetic and your values.



# Savannah Smooth

ARCHITECTURAL LAP SIDING



## SEE LAP SIDING MADE MODERN

Savannah Smooth reinvents the traditional.

A traditional wood lap home is a classic, dating back centuries. But today's lap siding simply falls short of the look and durability of fiber cement. That's why Nichiha modernized this timeless look, making it resistant to warping, rotting or falling victim to termites.

Savannah Smooth Architectural Lap Siding creates a timeless appeal backed by modern innovation. Its half-inch thick construction provides gorgeous shadow lines, making a statement and delivering classic head-turning beauty that will endure for decades.

### SAVANNAH SMOOTH



PRIMED

### SAVANNAH SMOOTH SPECS

	6-1/4"	7-1/4"	8-1/4"
HEIGHT (ACTUAL IN. ~ NOM. MM)	6-1/4" (158.75MM)	7-1/4" (186MM)	8-1/4" (209.55MM)
LENGTH (NOM. FT. ~ ACTUAL MM)	9' 4" (2865MM)	9' 4" (2865MM)	9' 4" (2865MM)
THICKNESS (NOM. IN. ~ ACTUAL MM)	1/2" (12MM)	1/2" (12MM)	1/2" (12MM)
WEIGHT (LBS. PER BOARD)	14.2	16.4	18.7
WEIGHT (LBS. PER SQ. FT.)	3.1	3.1	3.1
COVERAGE (SQ. FT. PER BOARD)	4.86	5.64	6.41
EXPOSED COVERAGE (SQ. FT. PER BOARD W/ 1-1/4" OVERLAP)	3.89	4.67	5.44
PACKAGING (BOARDS PER PALLET)	300	250	200





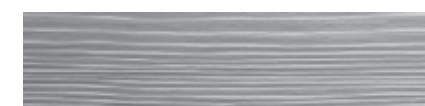


# MAKE TRADITIONAL AFFORDABLE

NichiBoard™ makes classic lap siding cost-effective.

We're making the traditional attainable and durable with NichiBoard. Resistant to warping, rotting or falling victim to termites, this panel delivers the look of lap and the performance of fiber cement at a price your budget will love. One of our most popular products, NichiBoard continues to be admired by builders and homeowners for its budget-friendly pricing and low-maintenance beauty – truly an outstanding value and an easy choice.

## NICHIBOARD



CEDAR



SMOOTH

## NICHIBOARD SPECS

WIDTH (IN.)	5-1/4"	6-1/4"	7-1/4"	8-1/4"	9-1/4"	12"
LENGTH (FT.)	12	12	12	12	12	12
THICKNESS (NOM. IN.)	5/16	5/16	5/16	5/16	5/16	5/16
WEIGHT (LBS. PER BOARD)	14.44	17.19	19.94	22.69	25.44	33.01
WEIGHT (LBS. PER SQ. FT.)	2.2	2.2	2.2	2.2	2.2	2.2
COVERAGE (SQ. FT. PER BOARD)	5.25	6.25	7.25	8.25	9.25	12
EXPOSED COVERAGE (SQ. FT. PER BOARD)	4	5	6	7	8	10-3/4
PACKAGING (PIECES PER PALLET)	296	252	216	190	170	128





# SIERRA PREMIUM

LUXURY ENGINEERED TO PERFORM



## EXPLORE A CLASSIC LOOK MADE TIMELESS

Sierra Premium™ Shake is the stunning answer to sustainability.

Sierra Premium is known for being dramatic. At a half-inch thick, these individual shakes create beautiful depth on buildings while offering durability that typical wood can't match. Not only will this fiber cement cladding require less maintenance, Sierra Premium stands up to the elements with ease. Rot, pests and warping are truly a thing of the past. With all of these features, it's no wonder Sierra Premium is the highest rated product of its kind.

### SIERRA PREMIUM SHAKE



MAHOGANY



MAPLE



CHARCOAL



SMOKE



PRIMED

### SIERRA PREMIUM SHAKE

HEIGHT (ACTUAL IN. - NOM. MM)	8 7/8" (225.4MM)
LENGTH (ACTUAL IN. - NOM. MM)	9' 4" (2845MM)
THICKNESS (ACTUAL IN. - NOM. MM)	1/2" (12MM)
WEIGHT (LBS. PER BOARD)	22.1
WEIGHT (LBS. PER SQ. FT.)	3
COVERAGE (SQ. FT. PER BOARD)	7
EXPOSED COVERAGE (SQ. FT. PER BOARD W/ 1-1/4" OVERLAP)	6.06
PACKAGING (BOARDS PER PALLET)	200





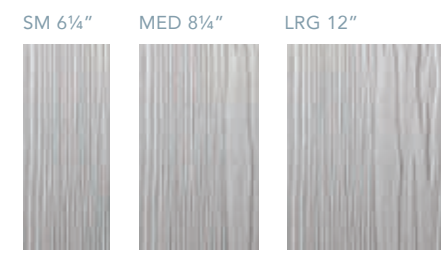


# FIND BEAUTY ON A BUDGET

NichiProducts help you achieve the look you love at the price you want.

Whether you're looking for more authenticity or convenience, Nichiha's value products have the perfect solution for you. Our three budget-friendly fiber cement cladding options all feature the classic deep contours of cedar grain without the traditional pricetag. For a customized look, NichiShake™ panels are available in a variety of widths to create a visual effect that is indistinguishable from cedar. For a quicker build, NichiStaggered™ and NichiStraight™ 4-foot panels let you choose between the classic look of straight edges and the striking contrasts of staggered ones.

## NICHISHAKE



NICHISHAKE SPECS	6-1/4"	7-1/4"	8-1/4"
WIDTH (INCHES)	6-1/4"	8-1/4"	12"
LENGTH (INCHES)	18"	18"	18"
THICKNESS (INCHES)	5/16"	5/16"	5/16"
WEIGHT (LBS. PER SQ. FT.)	2.2	2.2	2.2
PACKAGING	8 SQUARES/PALLET		
BUNDLES PER EXPOSED SQUARE (11PC/BUNDLE)	6	6	6

## NICHISTAGGERED



## NICHISTRAIGHT



NICHISTAGGERED & NICHISTRAIGHT SPECS	STAGGERED	STRAIGHT
HEIGHT (IN.)	16"	16"
LENGTH (FT.)	4'	4'
THICKNESS (NOM. IN.)	5/16"	5/16"
WEIGHT (LBS. PER PIECE)	12	12
WEIGHT (LBS. PER SQ. FT.)	2.2	2.2
PACKAGING (PIECES PER PALLET)	100	86
PACKAGING (PIECES PER EXPOSED SQ.)	50	43
SQUARES PER PALLET	2	2







# GET MORE CLADDING FOR LESS

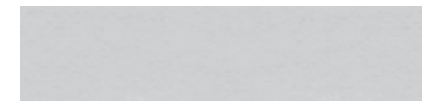
NichiPanel™ gives you the coverage you need at the price you want.

Every surface is an opportunity with NichiPanel. Available in three convenient sizes and four unique textures, this product offers numerous design options and is an obvious choice for covering big areas quickly and economically. But we decided to think beyond a single dimension. NichiPanels are also perfect for wrapping posts, creating wainscoting, covering ceilings and other applications where performance and aesthetics meet with a tight budget.

## NICHIPANEL



CEDAR



SMOOTH



STUCCO



GROOVED | 8" O.C. CEDAR (4' X 8' ONLY)

## NICHIPANEL SPECS

HEIGHT (FT)	4	4	4
LENGTH (FT)	8	10	12
THICKNESS (NOMINAL IN)	5/16	5/16	5/16
WEIGHT (LBS PER SQ FT)	2.2	2.2	2.2
WEIGHT (LBS PER PANEL)	88.2	110.1	132.1
COVERAGE (SQ. FT. PER BOARD)	32	40	48
EXPOSED COVERAGE (SQ. FT. PER BOARD W/ 1-1/4" OVERLAP)	49	39	32







# PUNCTUATE YOUR PROJECT

We make sure that you finish the job with confidence.

We've got every angle of your project covered with a unique product designed exactly how you need it. NichiSoffit™ panels are factory primed and sealed to ensure a long-lasting, attractive appearance. The panels are available in smooth or cedar texture as well as vented and non-vented styles.

Need to trim a home? Available in a smooth or cedar texture, NichiTrim™ boards offer the low maintenance façade homeowners desire. These products are factory primed and sealed, providing a beautiful and long-lasting appearance.

## NICHISOFFIT



VENTED CEDAR



VENTED SMOOTH



NON-VENTED CEDAR



NON-VENTED SMOOTH

## NICHITRIM



SMOOTH



CEDAR

## NICHISOFFIT SPECS

	NON-VENTED				VENTED			
	12	12	8	8	12	12	8	
LENGTH (FT.)	12	12	8	8	12	12	8	
WIDTH (IN.)	12	16	24	48	12	16	24	
THICKNESS (IN.)	1/4	1/4	1/4	1/4	1/4	1/4	1/4	
WEIGHT (LBS. PER PANEL)	26.5	35.3	35.3	70.5	26.5	35.3	35.3	
WEIGHT (LBS. PER SQ. FT.)	1.8	1.8	1.8	1.8	1.8	1.8	1.8	
PACKAGING (PANELS PER PALLET)	164	123	122	61	164	123	122	

## NICHITRIM SPECS

	Batten									
		3	4	6	8	8	10	12	12	
WIDTH	ACTUAL	2-1/2	3-1/2	5-1/2	7-1/4	7-1/2	9-1/4	11-1/4	11-1/2	
THICKNESS (IN)	3/4	•	•	•	•		•	•		
	1		•	•	•		•	•		
LENGTH (FT)	3/4	10	10	10	10	10	10	10	10	
	1		10	10	10	10	10	10	10	
WEIGHT (LBS PER BOARD)	3/4	12.9	13.7	21.6	28.4		35.2	44.1		
	1		18.1	28.5	37.4		47.5	58.1		
WEIGHT (LBS PER SQ FT)	3/4	4.7	4.7	4.7	4.7		4.7	4.7		
	1		6.2	6.2	6.2		6.2	6.2		
PACKAGING (BOARDS PER PALLET)	3/4	266	209	133		180		95	76	
	1		165	105	90	114	75	60		





# TAKE MODERN TO THE NEXT LEVEL

Our Architectural Wall Panels make modern accessible and yet so chic.

We've designed our products to work on every angle and every structure, making them the perfect finish to modern homes. With unique finishes and textures, we know that our Architectural Wall Panels are the ideal solution for the job. These versatile fiber cement panels can be installed in both exterior and interior applications and offer a simple clip installation system, using hidden fasteners that preserve the clean lines of modern design. They also feature patented rainscreen technology, which is a sophisticated drained and back-ventilated moisture management system that works to ensure the durability of your home for years to come. Explore some of our products below to find the inspiration you need to make your next modern design stand out from the rest.



ROUGHSAWN™ | 3 COLORS AVAILABLE



VINTAGEWOOD™ | 4 COLORS AVAILABLE



ARCHITECTURALBLOCK™ | 3 COLORS AVAILABLE

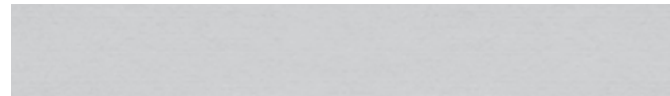


STACKEDSTONE™ | 2 COLORS AVAILABLE



CUSTOM COLOR AVAILABLE

RIBBED™

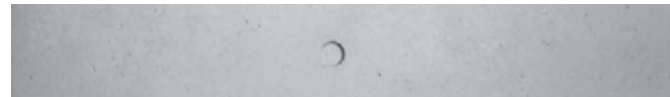


SAVANNAH SMOOTH | PRIMED



CUSTOM COLOR AVAILABLE

TUFFBLOCK™



EMPIREBLOCK™



INDUSTRIALBLOCK™



ILLUMINATION | CUSTOM COLORS



WANT TO SEE MORE?  
Visit [nichiha.com/modern](http://nichiha.com/modern)





# THE POWER OF POSSIBILITIES AND PARTNERSHIPS

Your vision is unique. That's why Nichiha offers the power of cooperation to help your project move from conception to completion. Our expansive offering of textures and finishes bring residential buildings to life, and we want to share this with you. We place a high value on our relationships and are proud to work with our dedicated partners. Join us to discover the power of possibilities and partnerships with Nichiha.

## NICHIHA WARRANTIES

- NichiBoard™, NichiFrontier™, NichiPanel™, NichiShake™, NichiStaggered™, NichiStraight™, Sierra Premium™ Shake and Savannah Smooth – 30 year limited warranty
- NichiTrim™ and NichiSoffit™ – 25-year limited warranty\*.

\*See Nichiha warranties for detailed information on terms, conditions and limitations. Visit [nichiha.com](http://nichiha.com) for easy downloadable warranties or call toll-free 1.866.424.4421 for a copy.

Nichiha MSDS is available at [nichiha.com](http://nichiha.com), at your local NICHIIHA dealer or call Nichiha direct, toll-free 1.866.424.4421.

## CERTIFICATION & TESTING\*\*



Report  
No. EC-58



Report  
No. FL12098  
No. FL12875



PER - 14088



NOA  
No. 18-0815.06  
No. 16-0404-18



CCRR-0258



Contains up to  
45% Recycled  
Content\*



SILICA DUST WARNING: Nichiha products may contain some amounts of crystalline silica [a.k.a. sand, silicon dioxide], which is a naturally occurring mineral. The amount will vary from product to product. Inhalation of crystalline silica into the lungs and repeated exposure to silica can cause health disorders, such as silicosis, lung cancer, or death depending upon various factors. To be conservative, Nichiha recommends that whenever cutting, sawing, sanding, sniping or abrading the product, users observe the Safety Instructions above. For further information or questions, please consult the MSDS, your employer, or visit [www.osha.gov/SLTC/silicacrystalline/index.html](http://www.osha.gov/SLTC/silicacrystalline/index.html) and [www.cdc.gov/niosh/topics/silica](http://www.cdc.gov/niosh/topics/silica). The MSDS for Nichiha products are available at [www.nichiha.com](http://www.nichiha.com), at your local Nichiha dealer or through Nichiha directly at 1.866.424.4421. FAILURE TO ADHERE TO OUR WARNINGS, MSDS, AND OTHER INSTRUCTION MAY LEAD TO SERIOUS PERSONAL INJURY OR DEATH.

NICHIBOARD, NICHIFRONTIER, NICHIPANEL, NICHIPRODUCTS, NICHISHAKE, NICHISOFFIT, NICHISTAGGERED, NICHISTRAIGHT, NICHITRIM, SIERRA PREMIUM, SAVANNAH SMOOTH, and THE POWER OF POSSIBILITIES are trademarks of Nichiha USA, Inc.

6465 E. JOHNS CROSSING, SUITE 250, JOHNS CREEK, GA 30097 | 866.424.4421 | [NICHIIHA.COM](http://NICHIIHA.COM)

NOTE: Printed material may not accurately depict actual product color. ©2018 Nichiha USA, Inc. All rights reserved. Printed in the USA. NLC 12.5K 12.18

